



IT'S TIME FOR
EFFECTIVE &
ATRAUMATIC GINGIVAL
RETRACTION

EXPASYL™
EXACT



NEW
EXACT
AMOUNT

ACTEON

EFFECTIVE GINGIVAL RETRACTION. EXACT AMOUNT, EXACT PRESSURE.



ACTEON introduced EXPASYL™ gingival retraction paste in 2000 and it is still the choice for clinicians worldwide for safe, minimally invasive tissue management.

EXPASYL™ facilitates accurate and pain-free impressions with digital intraoral scanners as well as traditional impression methods.

EXPASYL™ 20 YEARS

ORIGINAL
EXPASYL™
FORMULA

ONE CAPSULE
= ONE PATIENT

COST-EFFECTIVE
No wasted material

ASTRINGENT
EFFECT

BETTER
RESULTS

NO RISK
OF LESION TO
THE EPITHELIAL
ATTACHMENT



EXACT PRESSURE FOR PERFECT SULCU



AJ. Faucher, Académie du Sourire

CLINICAL EVIDENCE

- ▶ Preserved sulcular opening and efficient drying
- ▶ Astringent effect: no bleeding
- ▶ Clinical efficacy
- ▶ Preserves the epithelial attachment and gum line
- ▶ Fast, simple and affordable protocol

EFFECTIVE & ATRAUMATIC

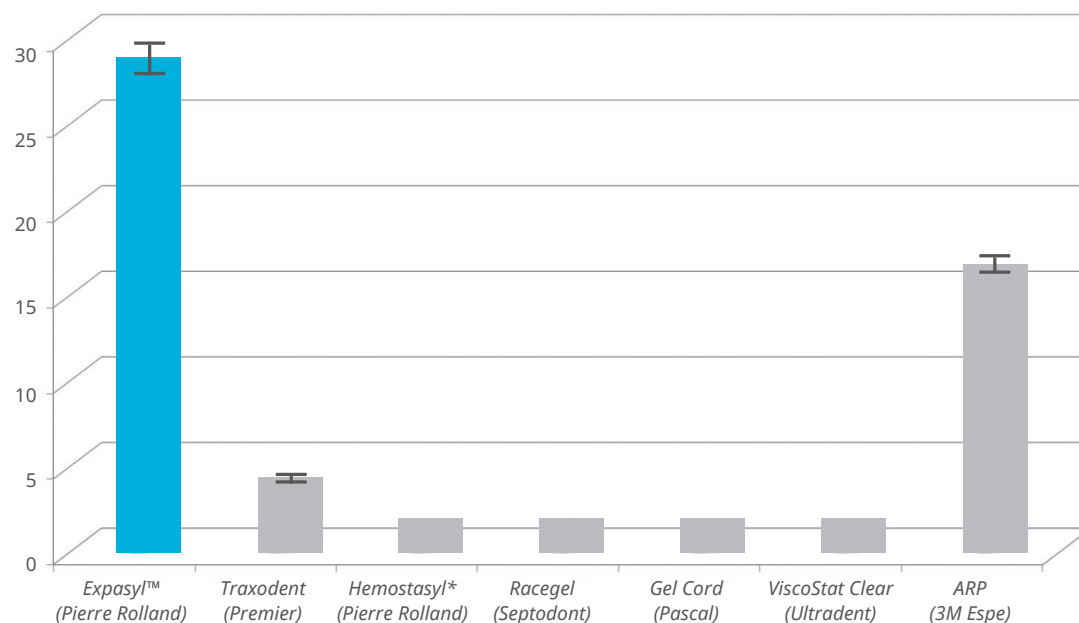
Expasyl™ Exact paste provides excellent benefits with little risks. Its viscosity has been carefully calculated to open the sulcus effectively without damaging the epithelial attachment.

Your procedure is both safe and effective.

- ▶ Expasyl™ generates a pressure that is 37 times less than a cord (143 vs 5396 kPa)⁽¹⁾
- ▶ The epithelial attachment is preserved and the risk of gingival recession and bone resorption are reduced
- ▶ Your patient doesn't suffer
- ▶ Expasyl™ generates a pressure that is 1.7 to 9.2 times **greater than other retraction pastes** available on the market⁽²⁾



(N)



Adapted from American Association for Dental Research

⁽¹⁾ Bennani V, Aarts JM, He LH. A comparison of pressure generated by cordless gingival displacement techniques. *J Prosthet Dent.* 2012 June;107(6):388-92.

⁽²⁾ Klettle T, Schulte C. "Force required to displace Pastes and gels for Gingival retraction", 2012 AADR Annual Meeting (Tampa, Florida) – Poster Session ID 1364.

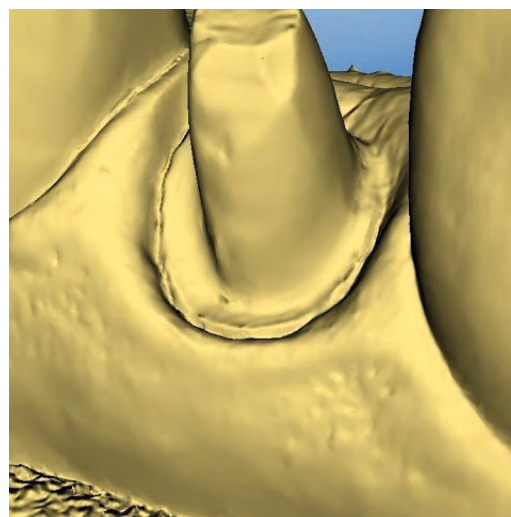
* Note: Hemostasyl is included in this study but is not a retraction compound.

ULAR OPENING

A GREAT IMPRESSION WITH SUPERIOR TISSUE MANAGEMENT

ONE DOSE
ONE PATIENT

- ▶ Exact amount in each capsule
- ▶ Cost-effective = no waste of material
- ▶ Works with ANY composite applicator gun



P. Lalet, e-dentisterie

- ▶ The compound opens the sulcus and dries it (blood, saliva and fluids) completely
- ▶ Expasyl™ facilitates access to the preparation limits and emergence profile for perfect impressions

FAST, SIMPLE AND AFFORDABLE PR

3 MINUTE PROTOCOL - SAVE ON COSTS & TIME

- ▶ **Easily inserts into the sulcus** in 20 seconds. No cannulas required.
- ▶ Works in **1-2 minutes max**
- ▶ Easily removed with a gentle air-water spray
- ▶ Expasyl™ Exact capsule avoids wasted material
- ▶ No need for additional anesthesia or hemostasis
- ▶ **Time saving:** up to 5 minutes per tooth (especially helpful when preparing multiple teeth)
- ▶ Impression made at the same clinical time



Rinse and gently dry the preparation area.



Position the end of the cannula to create a closed space. Slowly extrude the material.



Inject the paste in the sulcus all around the tooth to ensure the best possible impression quality.



Let Expasyl™ Exact act for **1-2 min max**. The gum tissue whitens, indicating the compression exerted by the material.



Clear the paste with a gentle air water spray with simultaneous HVE suction.



The sulcus is opened, and the site is completely dry. No trauma, pain, or bleeding. A perfect impression can now be taken.

PROTOCOL

EXPASYL PASTE* FOR ALL CLINICAL CASES

Images courtesy of Dr. Gary M. Radz, DDS



CASE 1

1

Tooth before Expasyl™



2

Expasyl™ initial application



3

Expasyl™ left in place for 1 minute



4

Tooth after removal of Expasyl™



5

Digital Impression taken after Expasyl™ protocol



Expasyl™ and Ceramic Bonding

Expasyl™ is a product I cannot do without in my day-to-day practice. It is extraordinary for making impressions and, in the time of ceramic restoration, essential for eliminating gingival fluid during bonding.

Dr. Gary M. Radz
Private Practice - DDS
Cosmetic Dentistry of Colorado



Expasyl™ Impressions and Cementation for Ceramic Restorations

Expasyl™ is my go to product for patients that present with thin biotype and/or low crest anatomic conditions. When you probe to bone on these patients, there is more than 3 mm of tissue present and they are highly susceptible to recession. EXPASYL does not disturb the epithelial

attachment, creates hemostasis and a gap that you can impress or scan. This technology ensures a predictable gingival complex with no recession visible on the cementation appointment.

Dr. Joyce Bassett, DDS
FAACD FAGD
Comprehensive, Cosmetic and Restorative Dentistry

* Expasyl™ Exact: Same paste as Expasyl™

EXPASYL™ EXACT



| References | Products |
|---|--|
| EXPASYL™ EXACT (0.3g CAPSULES) | |
| Ref. 261 011 | Expasyll™ Exact x 50 |
| Ref. 261 010 | Expasyll™ Exact x 20 |
| Ref. 261 036 | Applicator |
| EXPASYL™ - KIT & APPLICATOR (1g CAPSULES) | |
| Ref. 294 100 | Minikit: 1 Applicator + 6 Capsules + 12 Straight Cannulas (bendable) |
| Ref. 260 900 | Applicator x1 |
| EXPASYL™ - CAPSULES & CANNULAS (1g CAPSULES) | |
| Ref. 261 030 | Capsules x 20 |
| Ref. 294 010 | Capsules x 6 |
| Ref. 261 001 | Strawberry Capsules x 20 |
| Ref. 261 005 | Straight Cannulas (bendable) x 100 |
| Ref. 261 040 | Straight Cannulas (bendable) x 40 |

Read the instructions in the notice carefully before use.

All information that is essential to ensure correct use of these devices is included in the summary of the product characteristics available on the laboratory's website.

Manufacturer: Produits Dentaires Pierre Rolland - France.

Update: January 2020

ACTEON North America
124 Gaither Drive | Suite 140
Mount Laurel | NJ 08054 | USA
Tel. 1-800-289-6367 | Fax. 1-856-222-4726
www.acteongroup.com | info@acteonusa.com

